



# Pixelplasher Job Targets Add-On

for  **Batch Smart Layer Replace**

a script by Pixelplasher

for Adobe Photoshop CC 2018-2019

Windows / Mac



© 2018-2019 **Pixelplasher**. [www.pixelplasher.com](http://www.pixelplasher.com)

## End User License Agreement (EULA)

You may not distribute, resell or share this extension to your friends, relatives, or strangers. Doing so will discourage further improvement of this extension and support for newer versions of Adobe Photoshop.

You may share this extension to members of your family including parents, brothers or sisters provided that this EULA is read by the recipient.

# Installation

## Installing from Adobe Exchange

If installing from the zxp file, do not use Adobe Extensions Manager which was discontinued since 2014, to install the zxp file. Errors await. You will waste your time.

Use any of the following Adobe extension installers:

- [Electron Adobe ZXPInstaller](#), an open source Adobe extension installer from [zxpinstaller.com](#)
- [ExManCmd](#) command-line tool from Adobe

To install and use this add-on, you must install the main script, Pixelsplasher Batch Smart Layer Replace Basic (sold separately) first as well as the Job Queue add-on (sold separately). Otherwise, this add-on will not install.

## Verifying the Installation

After acquiring the extension from Adobe Exchange or installing from the zxp file, navigate to the following folder:

Windows—C:/Program Files/Adobe/Adobe Photoshop CC [Version Year]/Presets/Scripts

Mac--/Applications/Adobe Photoshop CC [Version Year]/Presets/Scripts

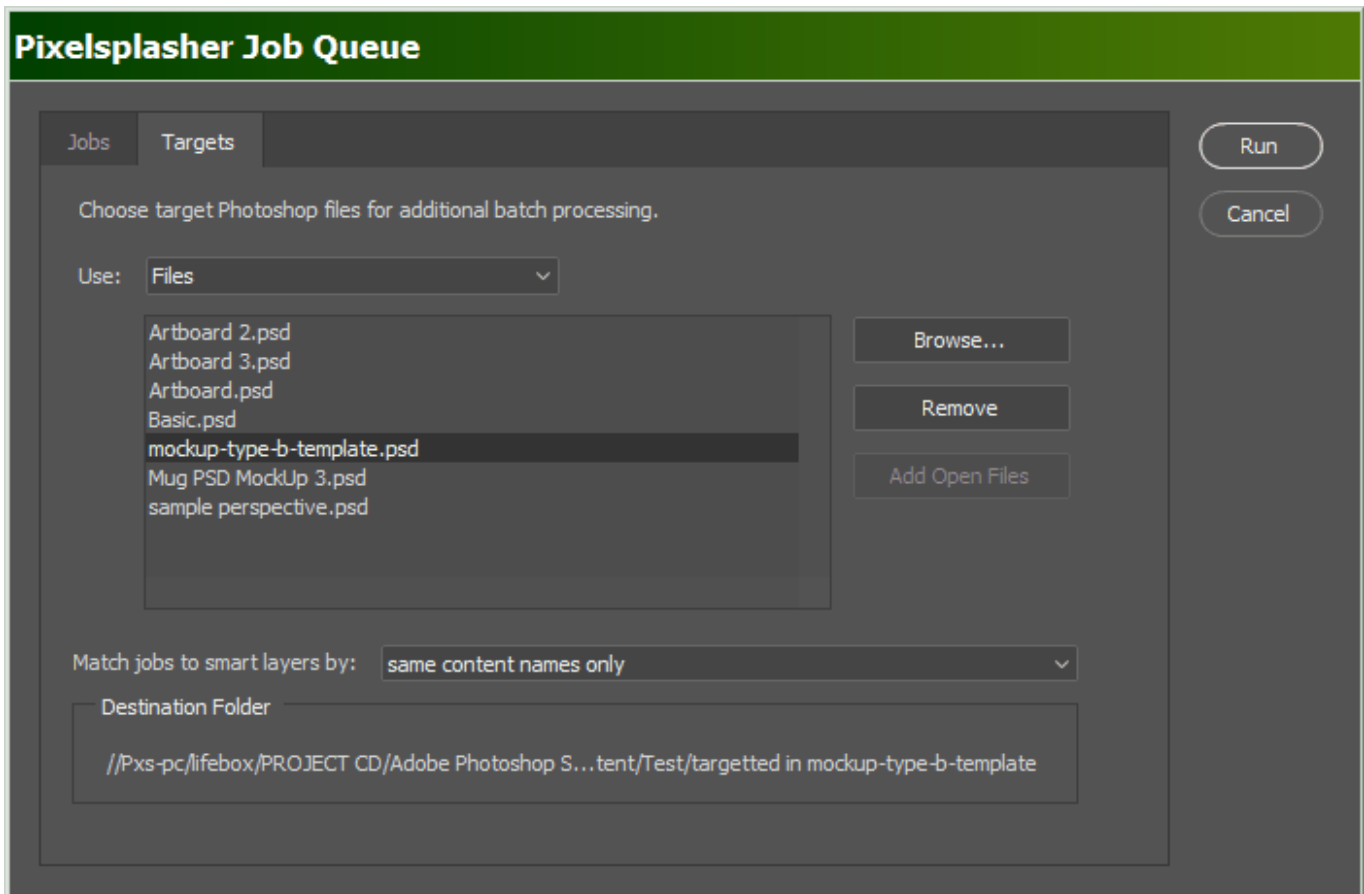
And check if the following file were successfully installed in the “Pixelsplasher Scripts Only” folder:

- JobTargets.jsx

## Getting Started

To access the Job Targets add-on script, select a smart layer and click on

File > Export > Smart Layer Replace... > (Add input files) > Queue button > Targets  
tab



You must only go to the Targets tab when you are ready to run the job queue. If you click the Cancel button, the list of target PSD files will be lost.

## Adding Target Files

### *Use drop-down menu: Folder*

Click the **Browse...** button and select one a local or network folder.

### *Use drop-down menu: Files*

Click the **Browse...** button and select one or more files within any local or network folder.

## Add Open Files

Clicking the **Add Open Files** button will include any open PSD documents in the targets list. There is no need to save any changes made in the open documents. However, the open document must be saved at least once.

## Targeting Smart Layers in PSD Files

### Same content names only

Selecting this option will replace only those smart layers that have content names matching any of the content names in the job queue

### Same content names then any

Selecting this option will replace the smart layers with matching content names first, then if any other smart layers have no matching jobs while there is any unmatched jobs left in the job queue.

## Destination Folders

The output files will be saved to a corresponding sub-directory of each target PSD file. The output folder will be named

`/targetted in [PSD file name]`

## Action Buttons

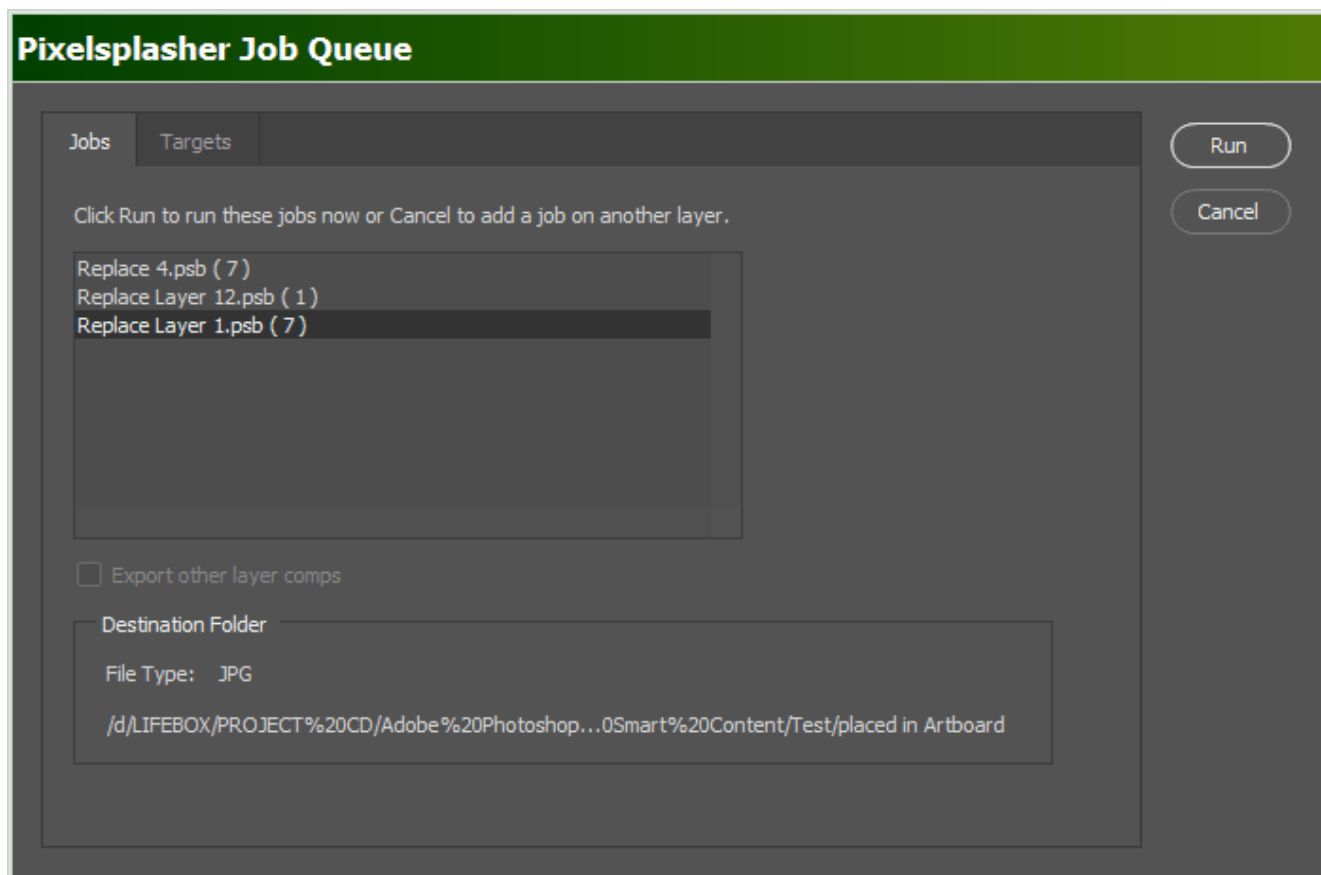
### Run

Clicking Run button will run the Smart Layer Replace script and apply the replacement jobs that are queued in the list box, targeting each set of queued jobs to each PSD in the added in the Targets tab.

### Cancel

The Cancel button closes the Job Queue window and no other actions are taken. The list of target PSD files are discarded.

## Other Add-Ons



### Job Queue

\$9/P\$7

This is an add-on script that is sold separately and is where the Job Targets add-on is integrated with. All replacement jobs in the job queue are applied by Job Targets to all target PSD files. With the Job Queue add-on, it is possible to have several smart layer replacements made in each PSD target.

**NEW!** Job Queue now has an option to separately export each layer comp in the PSD.

Job Queue demo: [https://www.youtube.com/watch?v=He\\_dmvHEphc](https://www.youtube.com/watch?v=He_dmvHEphc)



## How To Purchase

Add-ons may not yet be available at [Adobe Exchange](#). Prices may be slightly higher at Adobe Exchange to cover the cost of services by Adobe and Fast Spring.

For now, you can purchase add-ons by sending payments to Paypal at <https://www.paypal.me/pixelsplasher> and mentioning the add-on name and the email address to send it to.

You can save by purchasing the add-ons as a bundle<sup>1</sup> at [Adobe Exchange](#) or [PayPal.me](#):

**Smart Layer Replace (\$12/~~P~~\$9), Job Queue (\$9/~~P~~\$7) and Job Targets Bundle**  
(\$7/~~P~~\$5) - \$28 **\$24.00 (save \$4)** / ~~P~~\$21 **\$18.00 (save \$3)**

**Smart Layer Replace (\$12/~~P~~\$9) and Job Queue (\$9/~~P~~\$7) Bundle** - \$21 **\$18.00 (save \$3)** / ~~P~~\$16 **\$14.00 (save \$2)**

**Job Queue (\$9/~~P~~\$7) and Job Targets (\$7/~~P~~\$5) Add-Ons Only Bundle** - \$16 **\$14.00 (save \$2)** / ~~P~~\$12 **\$10.00 (save \$2)**

## Customer Support

**Facebook:** <https://www.facebook.com/PixelsplasherDotCom/>

**Email:** [webmaster@pixelsplasher.com](mailto:webmaster@pixelsplasher.com)

Contact Pixelsplasher if you need help making the script work according to your needs. You may be asked to submit your PSD file and input file.

You may also request certain features that other customers may want to use. A major feature may be added as a separate add on script to be sold separately.

---

<sup>1</sup> Bundle purchases cost approximately 14.28% less than the cost of equivalent individual item purchases

## Updates

If you have purchased the script at Adobe Exchange, you can download applicable updates at: <https://exchange.adobe.com/creativecloud.partner.0011O00002DWKV7QAP.html>

If you have received the script via Google Drive, you can revisit the file link to check for new versions and download it. You may also add the file to your Google Drive folder as a shared file.

You may also receive update notifications in your email.