



Pixelsplasher File Options Add-On for Batch Smart Layer Replace

a script by Pixelsplasher
for Adobe Photoshop CS5-CC 2020
Windows / Mac



FIND IT ON

Adobe Exchange

End User License Agreement (EULA)

You may not distribute, resell or share this extension to your friends, relatives, or strangers. Doing so will discourage further improvement of this extension and support for newer versions of Adobe Photoshop.

You may share this extension to members of your family including parents, brothers or sisters provided that this EULA is read by the recipient.

Installation

Installing from Adobe Exchange

If installing from the xzp file, do not use Adobe Extensions Manager which was discontinued since 2014, to install the xzp file.

Use any of the following Adobe extension installers:

- **Electron Adobe ZXPIInstaller**, an open source Adobe extension installer from zxpinstaller.com
- **ExManCmd** command-line tool from Adobe

To install and use this add-on, you must install the main script, **Pixelplasher Batch Smart Layer Replace** Basic (sold separately) first as well as the **Job Queue** add-on (sold separately). Otherwise, this add-on will not install.

Verifying the Installation

After acquiring the extension from Adobe Exchange or installing from the xzp file, navigate to the following folder:

- **Windows**—C:/Program Files/Adobe/Adobe Photoshop [Version]/Presets/Scripts
- **Mac**--/Applications/Adobe Photoshop [Version]/Presets/Scripts

And check if the following file were successfully installed in the "Pixelplasher Scripts Only" folder:

- FileOptions.jsx

Installing from Zip

If you received this extension directly from Pixelplasher in a zip file, extract the aforementioned files to the same location mentioned in "Verifying the Installation".

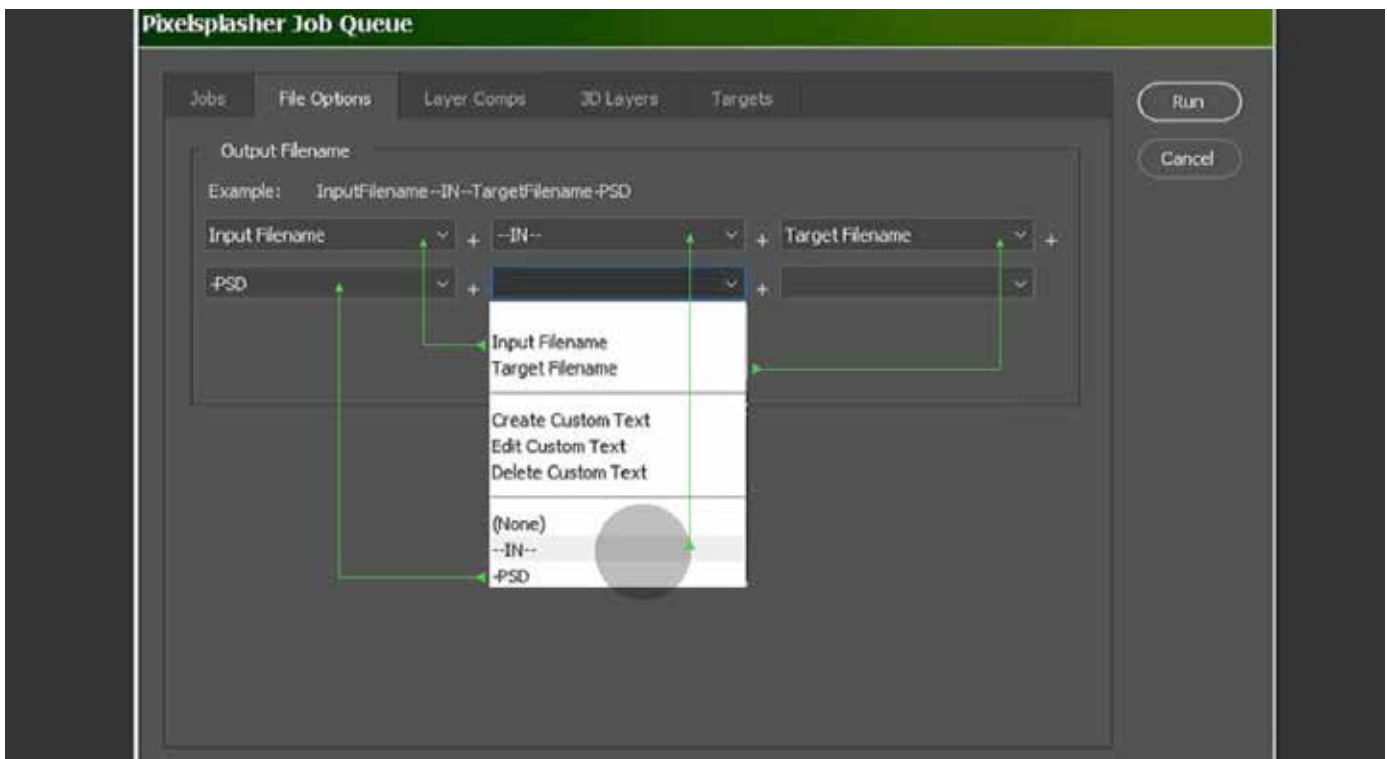
How To Use

To access the File Options add-on, select a smart layer, then click on the menu:

- Adobe Photoshop CC: **File** > **Export** >
- Adobe Photoshop CS: **File** > **Automate** >

Then:

- **Smart Layer Replace...** > (Add input image files) **Queue** > **File Options** Tab



Filename Segment Options

Currently, only the following filename segment options are available. More will be added soon according to customer requests.

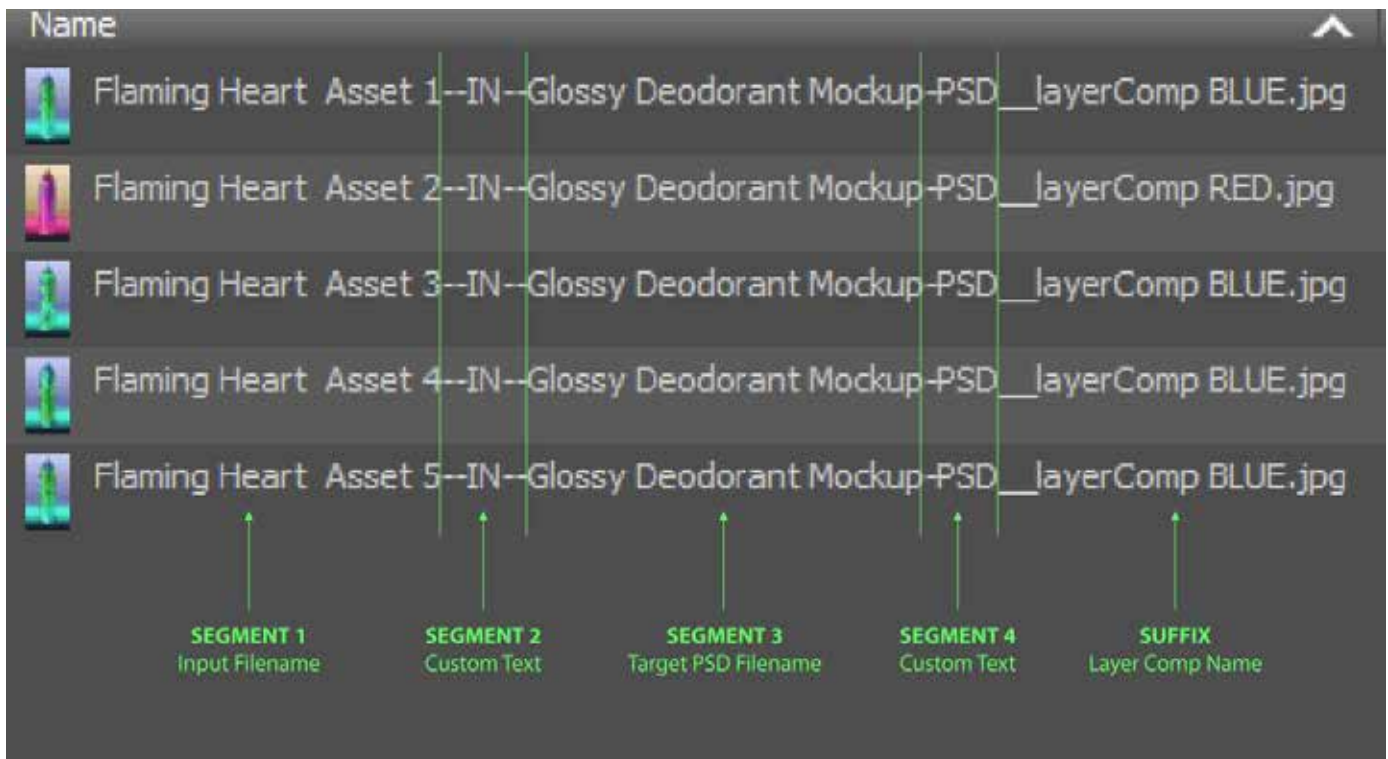
- **Input Filename.** The filename of the replacement image file is used. If more than one smart layer is being replaced, the last replacement image filename in the current replacement job is used.
- **Target Filename.** The filename of the currently opened document is used. This can also be the currently opened target document of the Job Targets add-on.

- **Create Custom Text.** Creates a custom text which also becomes a re-usable filename segment option.
- **Edit Custom Text.** Edits the custom text currently used by the filename segment where this option is found. Any filename segment using the edited custom text will update to the change.
- **Delete Custom Text.** Deletes the custom text currently used by the filename segment where this option is found. Any filename segment using the deleted custom text will reset to blank.
- **None.** Resets to blank the filename segment where this option is found. No other filename segments will be affected.

Automatically Added Filename Segments

There are filename segments that are automatically prepended or appended to the custom-formatted filename. These are represented inside brackets [];

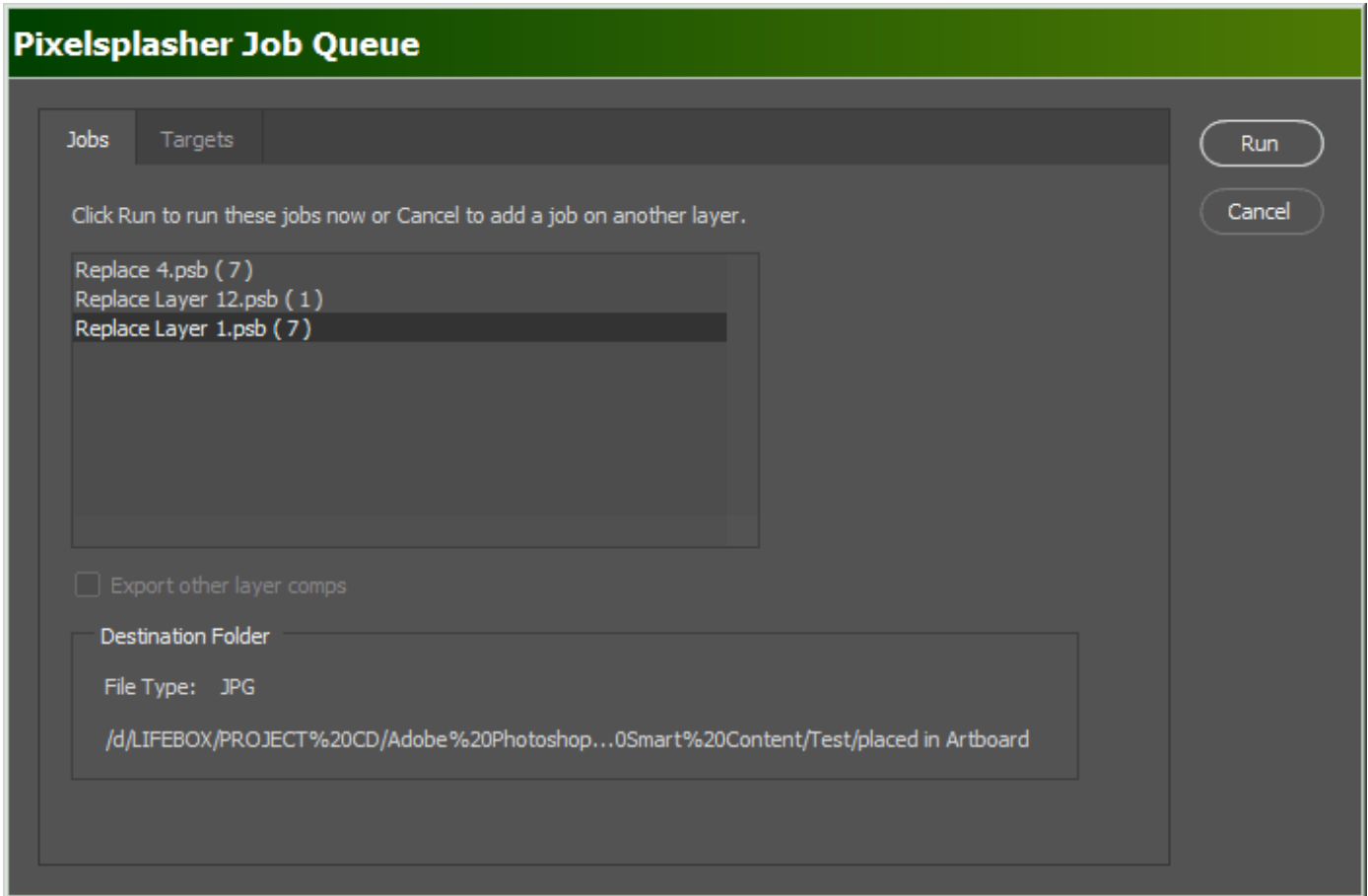
- filename__[Layer Comp Name].ext



An example file list as a result of filename formatting mentioned above.

Other Add-Ons

Prices are indicated as \$Adobe Exchange price/\$Direct-to-author price payed via Paypal.
Example: \$9/\$7



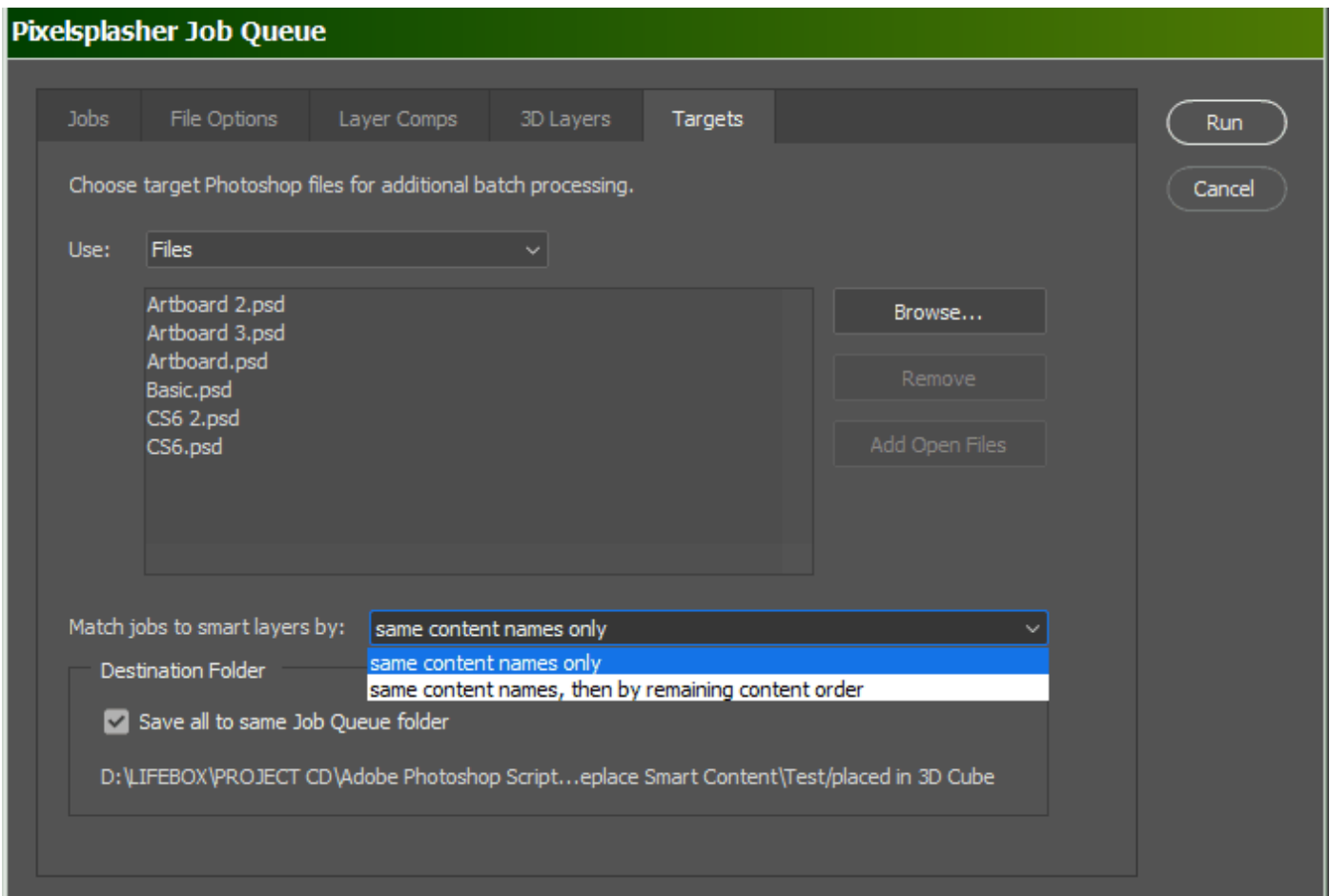
Job Queue Add-On

\$9/\$7

This is an add-on script that is sold separately and is where the Job Targets add-on is integrated with. All replacement jobs in the job queue are applied by Job Targets to all target PSD files. With the Job Queue add-on, it is possible to have several smart layer replacements made in each PSD target.

Job Queue has an option to separately export each layer comp in the PSD.

Job Queue demo: https://www.youtube.com/watch?v=He_dmvHEphc

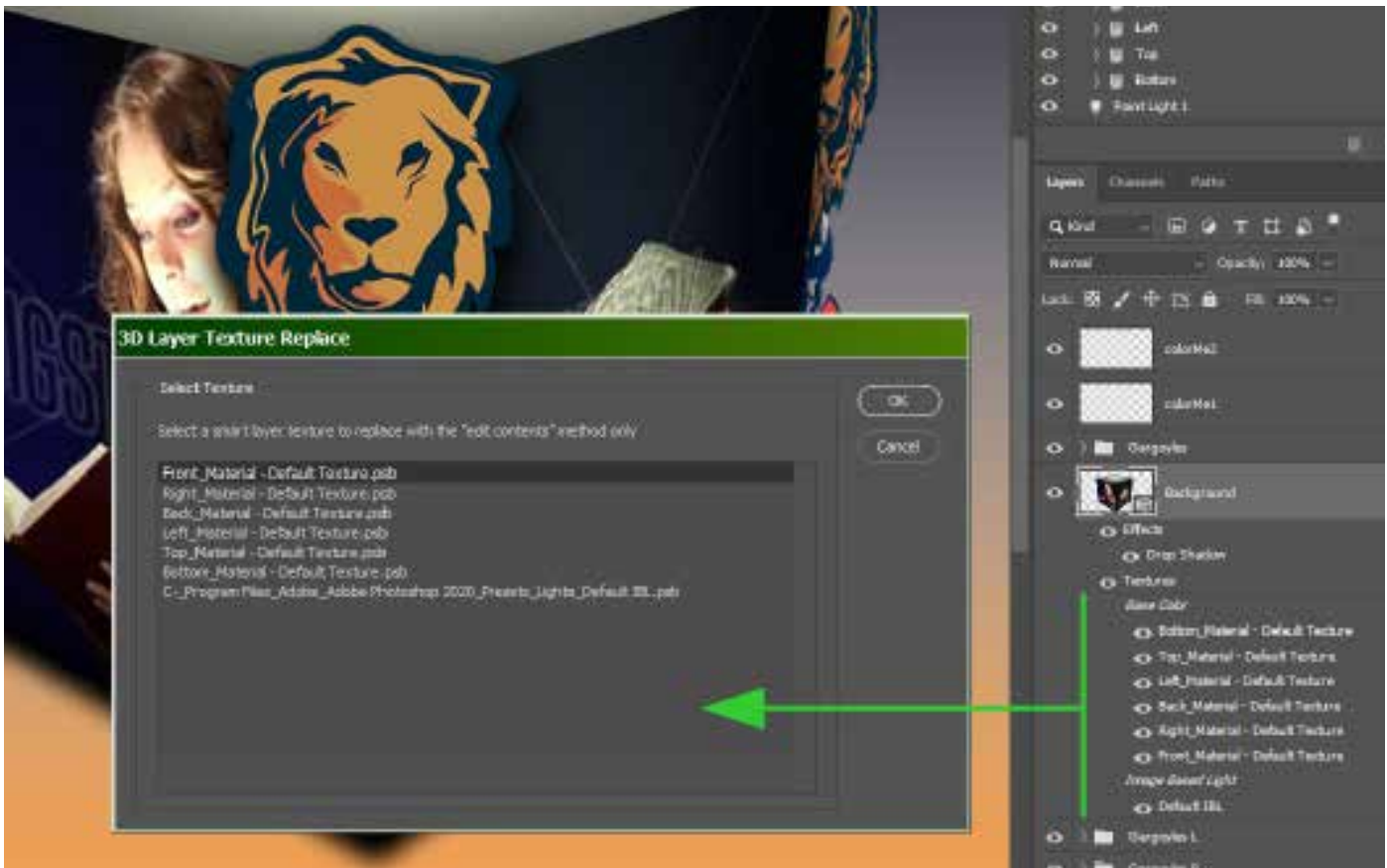


Job Targets Add-On

\$7/P\$5

This is a tab in the Job Queue window where you can load PSD and PSB files to apply the replacement jobs to, in addition to the starting open document where the script is running. You have the option to match the target smart layer contents with the replacement jobs' target smart layers only, or in addition to that, apply replacement jobs that have no matching smart layer content in the target file to any remaining available smart layers.

Job Targets demo: <https://www.youtube.com/watch?v=a4XETqBEMQ8>

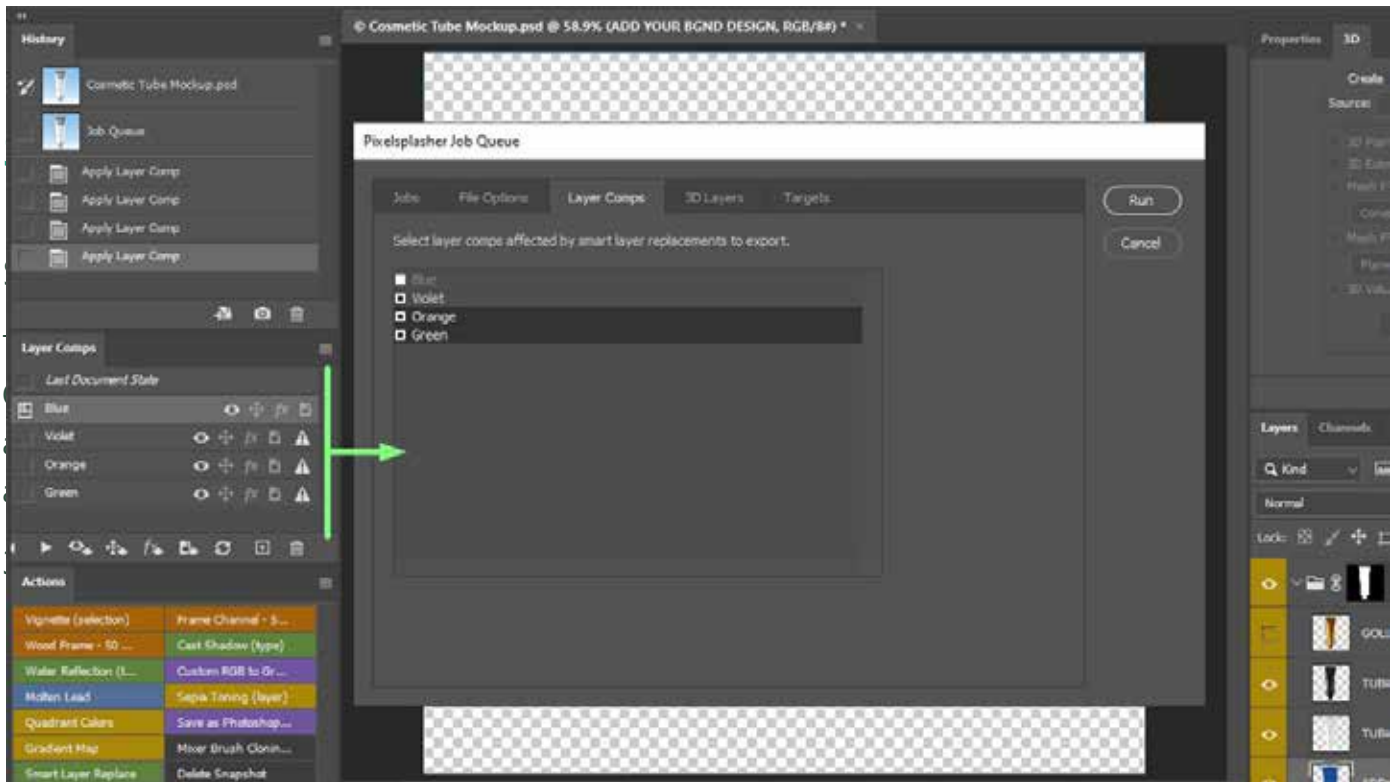


3D Layer Add-On

\$9/P\$7

The 3D Layer add-on gives the ability of the Smart Layer Replace extension as well as the Job Queue add-on to replace smart layers found in texture layers of 3D objects. The extension is able to scan the 3D layer for textures and let you choose which one to replace. You can select another texture later and queue it in Job Queue.

3D Layer add-on demo: <https://www.youtube.com/watch?v=4GN2qys0RqM>



Layer Comps Add-On

\$7/P\$5

Although you are able to export all layer comps as an option in the Job Queue add-on, Layer Comps gives you the option to select which layer comps to include for export in addition to the currently selected layer comp.

Layer Comps demo: <https://www.youtube.com/watch?v=e89VYldPSVo>

How To Purchase

Prices may be slightly higher at [Adobe Exchange](#) to cover the cost of services by Adobe and Fast Spring.

You can purchase add-ons directly from Pixelsplasher by sending payments to Paypal at <https://www.paypal.me/pixelsplasher> and mentioning the add-on name and the Gmail address to share it to with Google Drive.

Get a discount of \$1 per item by buying more than one item with  PayPal.me.

Customer Support

Facebook: <https://www.facebook.com/PixelsplasherDotCom/>

Email: webmaster@pixelsplasher.com

Contact Pixelsplasher if you need help making the script work according to your needs. You may be asked to submit your PSD file and input file.

You may also request certain features that other customers may want to use. A major feature may be added as a separate add on script to be sold separately.

Tutorial videos are available at the Pixelsplasher YouTube channel: <https://www.youtube.com/Pixelsplasher>

Updates

All users are entitled to free updates up to one year since date of purchase. If you have purchased the script at Adobe Exchange, you can download applicable updates at: <https://exchange.adobe.com/creativecloud.partner.0011O00002DWKV7QAP.html>. Add-ons purchased at Adobe Exchange are subscription-based and may need to be renewed to continue getting newer version updates after one year since date of purchase.

If you have received the script via Google Drive, you can revisit the file link to check for new versions and download it. You may also add the file to your Google Drive folder as a shared file.

You may also receive update notifications in your email.