



Pixelsplasher 3D Layer Add-On for **Batch Smart Layer Replace**

a script by Pixelsplasher
for Adobe Photoshop CS5-CC 2020
Windows / Mac



FIND IT ON

Adobe Exchange

End User License Agreement (EULA)

You may not distribute, resell or share this extension to your friends, relatives, or strangers. Doing so will discourage further improvement of this extension and support for newer versions of Adobe Photoshop.

You may share this extension to members of your family including parents, brothers or sisters provided that this EULA is read by the recipient.

Installation

Installing from Adobe Exchange

If installing from the xzp file, do not use Adobe Extensions Manager which was discontinued since 2014, to install the xzp file.

Use any of the following Adobe extension installers:

- **Electron Adobe ZXPInstaller**, an open source Adobe extension installer from zxpinstaller.com
- **ExManCmd** command-line tool from Adobe

To install and use this add-on, you must install the main script, **Pixelplasher Batch Smart Layer Replace** Basic (sold separately) first as well as the **Job Queue** add-on (sold separately). Otherwise, this add-on will not install.

Verifying the Installation

After acquiring the extension from Adobe Exchange or installing from the xzp file, navigate to the following folder:

- **Windows**—C:/Program Files/Adobe/Adobe Photoshop [Version]/Presets/Scripts
- **Mac**--/Applications/Adobe Photoshop [Version]/Presets/Scripts

And check if the following file were successfully installed in the “Pixelplasher Scripts Only” folder:

- 3DLayer.png
- 3DLayerTextureReplace.exv
- 3DLayerTextureReplace.jsx
- 3DLayerTextureReplace.win

Installing from Zip

If you received this extension directly from Pixelsplasher in a zip file, extract the aforementioned files to the same location mentioned in "Verifying the Installation".

How To Use

To access the 3D Layer add-on script, select a 3D layer, then click on the menu:

- **File** > **Export** > **Smart Layer Replace...** > (Select a texture layer) / **OK**

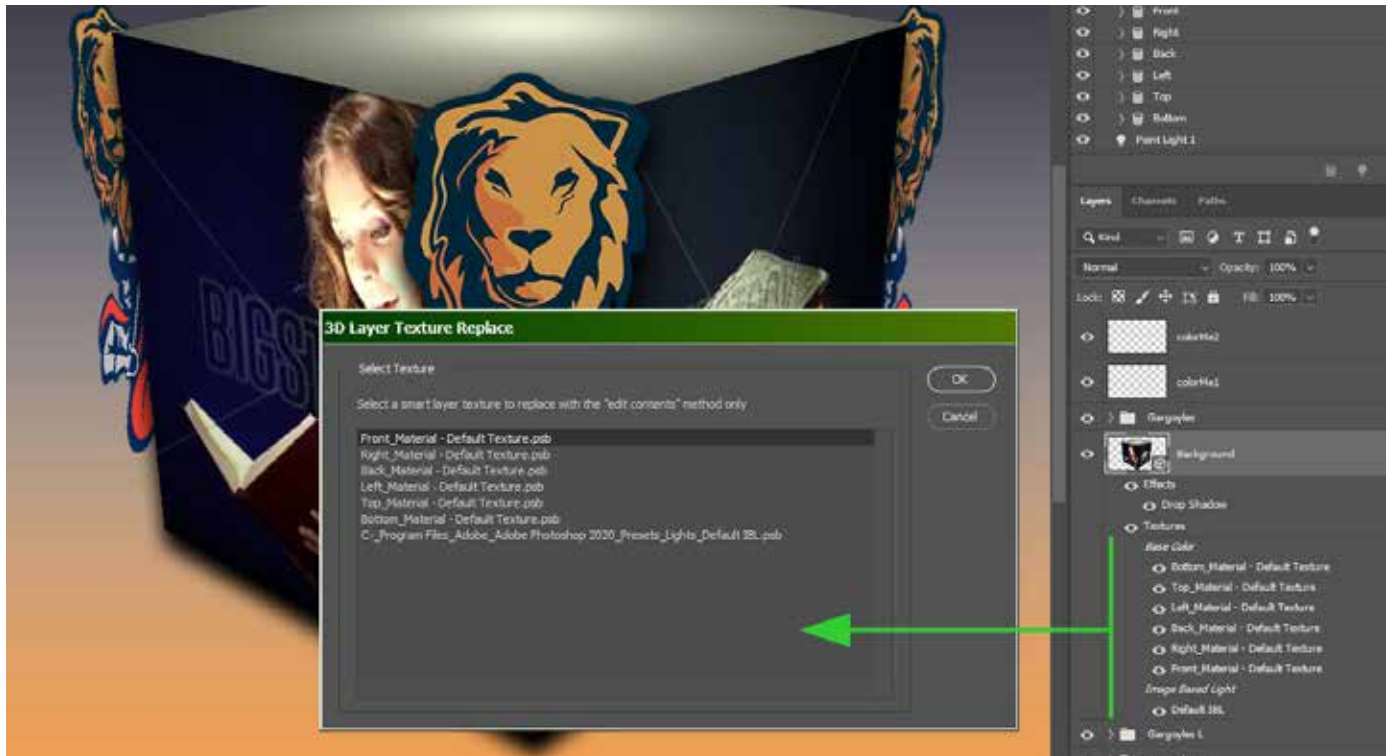
In the Smart Layer Replace window, 3D layer is also supported in Job Queue add-on (sold separately):

- **Queue** button > **3D Layer** tab (Select 3D layers to render before each export)

Make sure that GPU hardware acceleration is enabled in Photoshop preferences. Otherwise, Smart Layer Replace will not continue.

Selecting a 3D Layer Texture to Replace

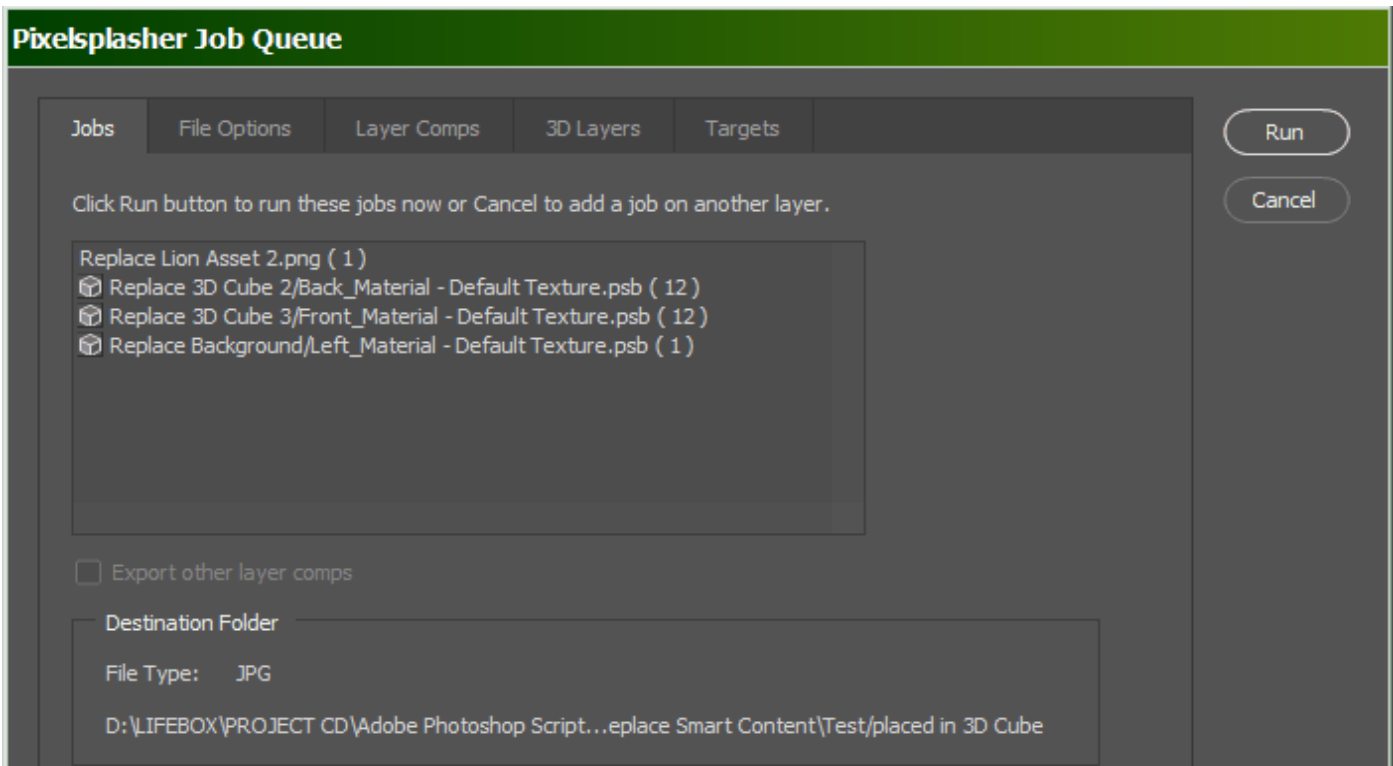
If you have selected a 3D layer before running Smart Layer Replace, Photoshop will scan the layer for available texture layers to replace and the add-on will allow you to select which one:



If you are unsure which texture layer to target, click **Cancel** and find out the name of the texture layer that you want to auto-replace by double-clicking each texture layer in the Layer palette to view its content.

Adding a 3D Layer Texture Replacement to Job Queue

It is possible to auto-replace more than one texture layer on a 3D layer by adding it to the job queue. This requires the Job Queue add-on which is sold separately. When you have finished adding image files to Smart Layer Replace and set up associated options, click on the **Queue** button.



3D texture replacement jobs are indicated by the  icon in the jobs list. The following format is used to list 3D layer job items:

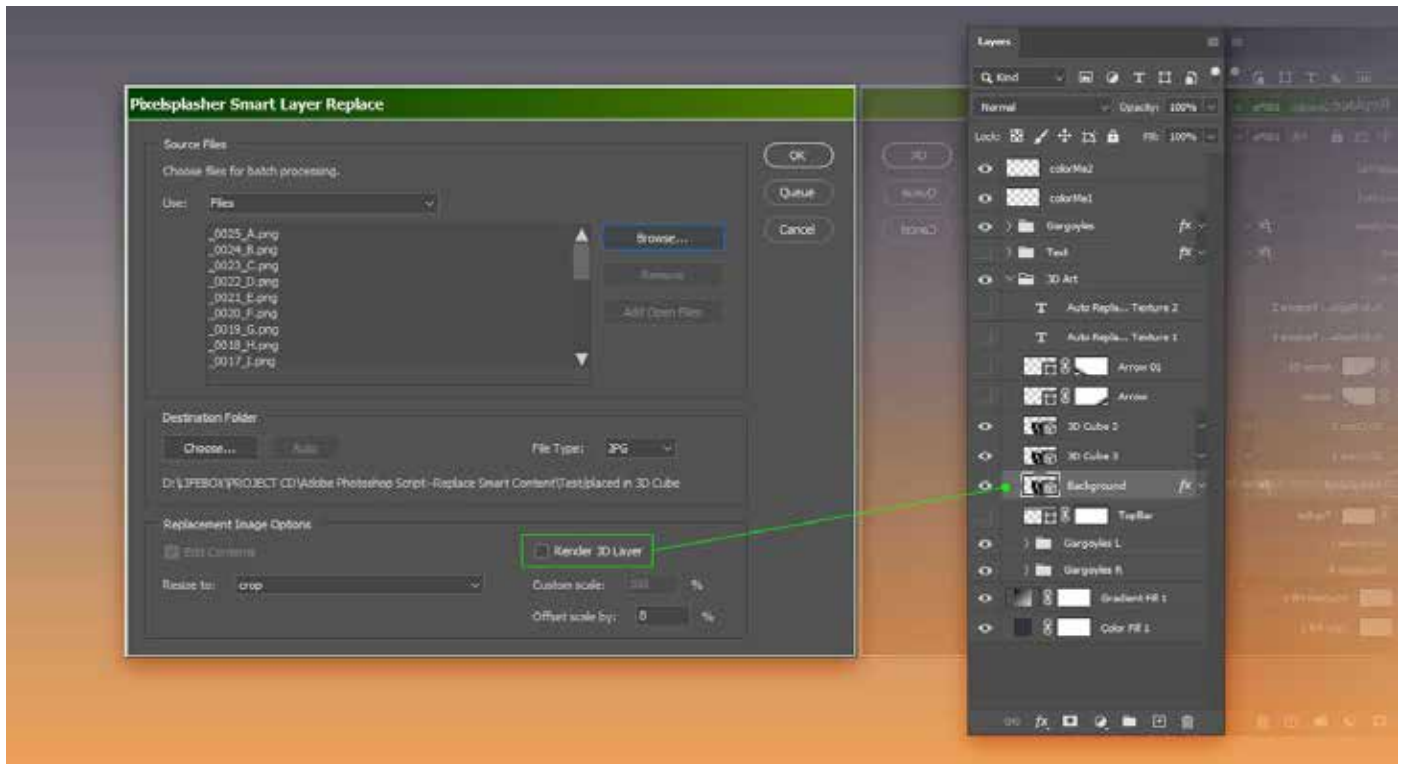
- Replace [3d layer name]/[texture layer name] ([number of replacements])

Please read the Job Queue add-on user guide about more export options that you can set.

Rendering 3D Layers Before Each Export

If you want the selected 3D layer to be rendered after all replacements are made for that layer, there are two ways to enable this option:

- tick the **Render 3D Layer** option under Replacement Image Options of Smart Layer Replace.

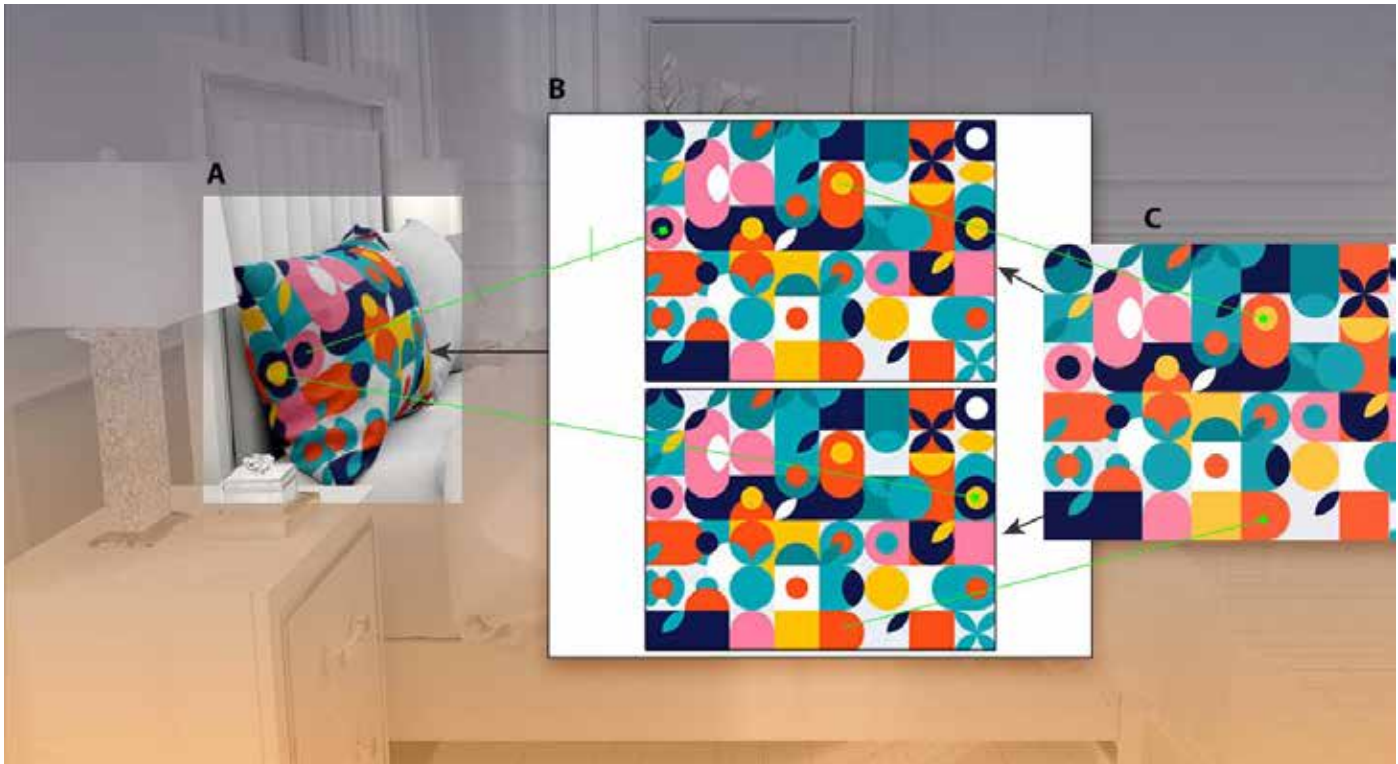


- in Job Queue add-on (sold separately), you can enable / disable rendering any 3D layer by selecting / deselecting it in the **3D Layers** tab

By default, the render 3D layer option is disabled since most users will prefer to skip this time-consuming process.

Auto-Replacing Texture Maps in 3D Layers

A texture layer can be a texture map which may be used to wrap more than one image into 3D objects, matching each to a side such as the front and back sides of a pillow case.



A. 3D layer **B.** texture layer with two smart layers **C.** replacement images for texture layer

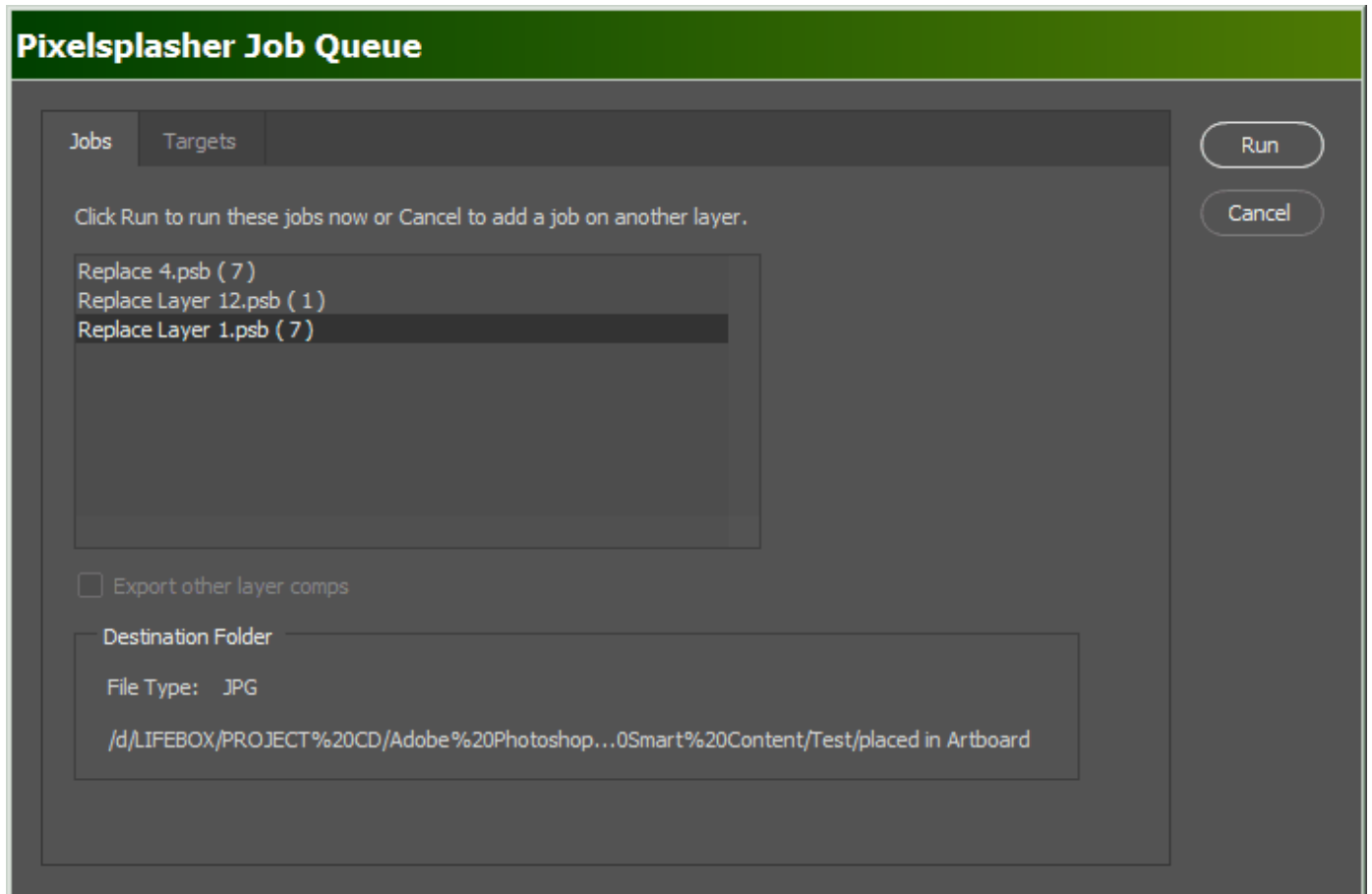
With this set up, Smart Layer Replace is first separately run on the texture layer to generate the texture map files, which in turn are used to auto replace the texture layer on the 3d object.

See demo video: https://youtu.be/a5TsK_dtK5I

Most commercial mock-ups use texture maps containing raster images instead of smart layers. You will have to convert the raster images into smart layers and run Smart Layer Replace with the Job Queue add-on on each of them. This step is also demonstrated in the above-mentioned video.

Other Add-Ons

Prices are indicated as \$Adobe Exchange price/**P**\$Direct-to-author price payed via Paypal.
Example: \$9/**P**\$7



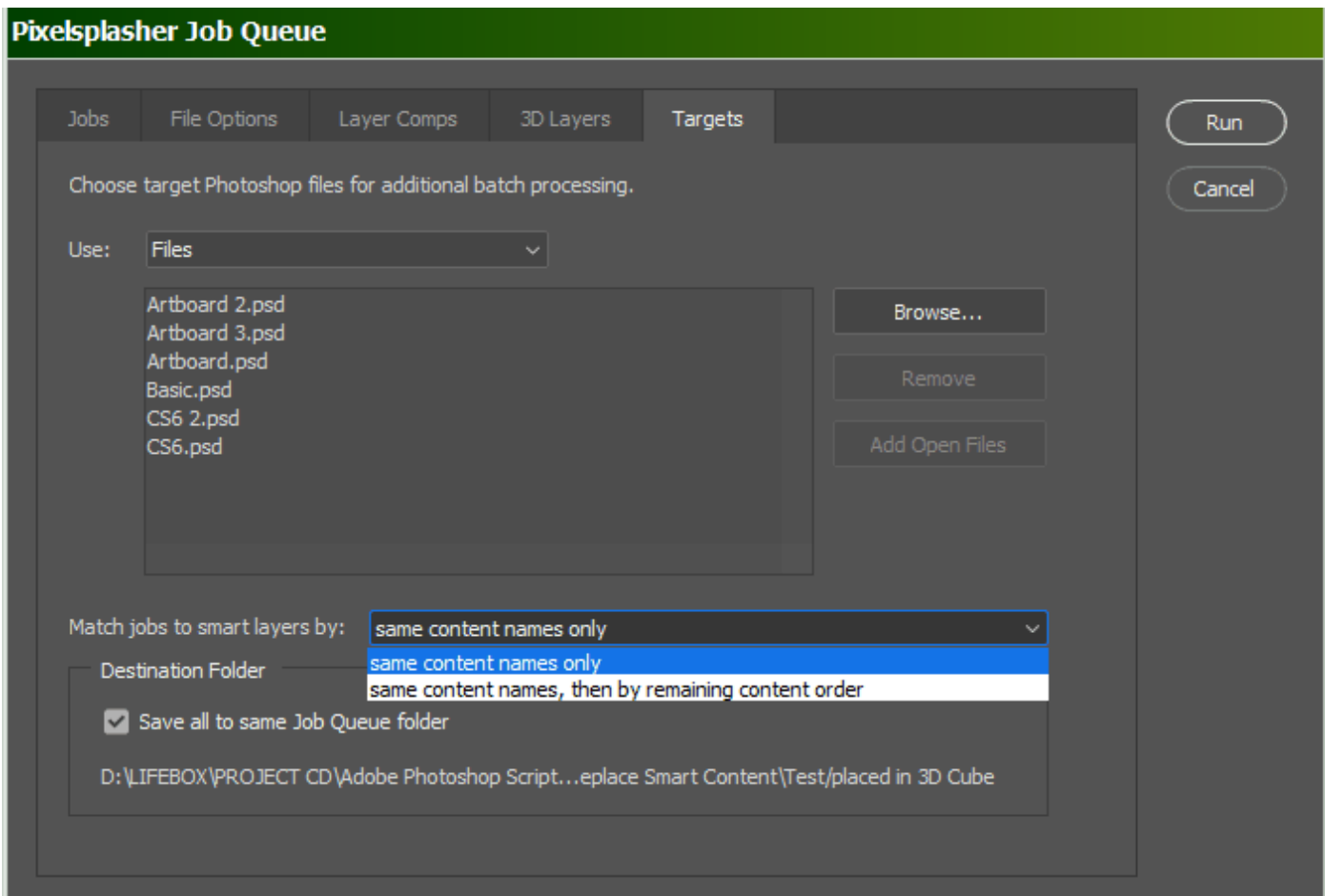
Job Queue Add-On

\$9/**P**\$7

This is an add-on script that is sold separately and is where the Job Targets add-on is integrated with. All replacement jobs in the job queue are applied by Job Targets to all target PSD files. With the Job Queue add-on, it is possible to have several smart layer replacements made in each PSD target.

Job Queue has an option to separately export each layer comp in the PSD.

Job Queue demo: https://www.youtube.com/watch?v=He_dmvHEphc

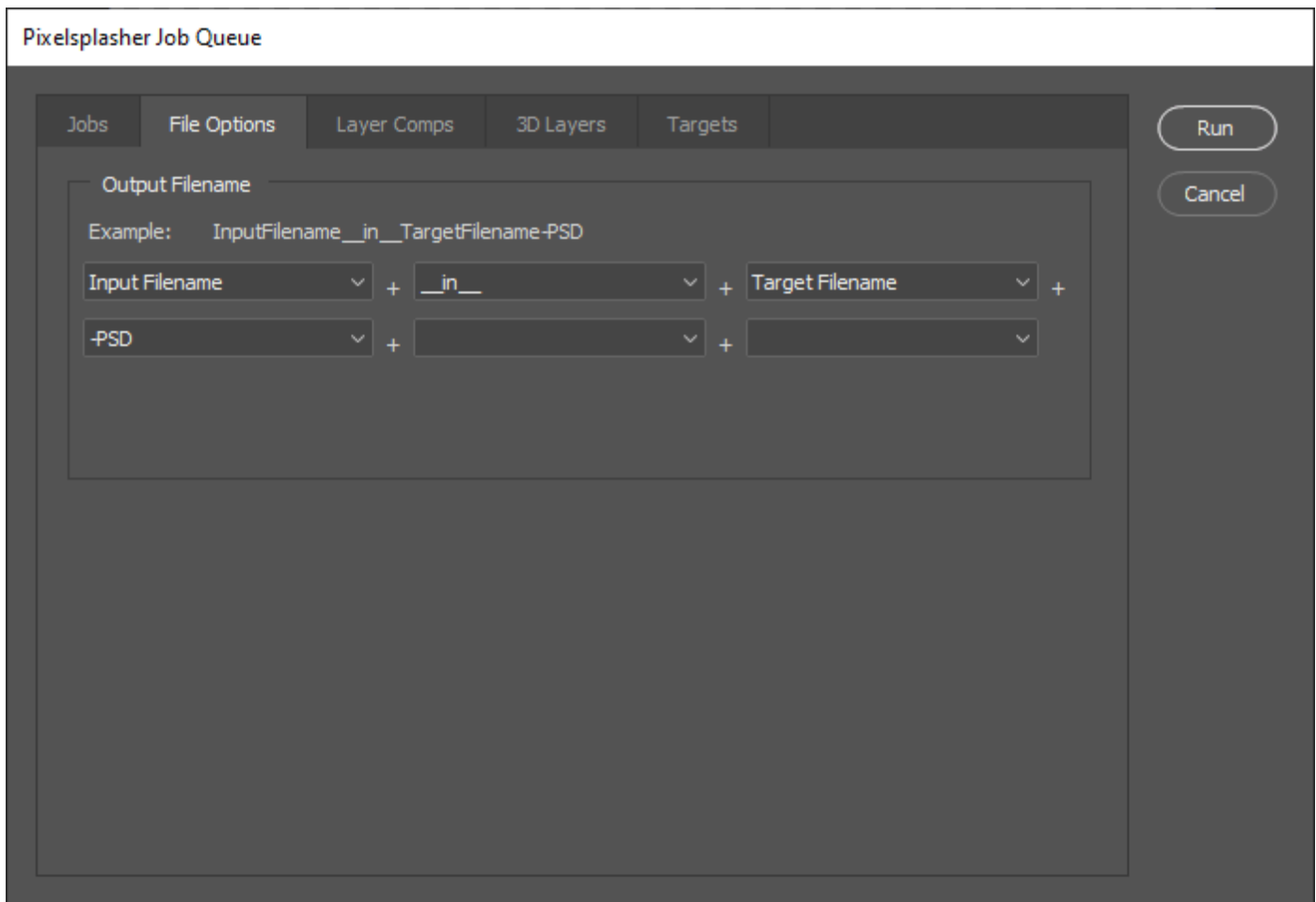


Job Targets Add-On

\$7/P\$5

This is a tab in the Job Queue window where you can load PSD and PSB files to apply the replacement jobs to, in addition to the starting open document where the script is running. You have the option to match the target smart layer contents with the replacement jobs' target smart layers only, or in addition to that, apply replacement jobs that have no matching smart layer content in the target file to any remaining available smart layers.

Job Targets demo: <https://www.youtube.com/watch?v=a4XETqBEMQ8>

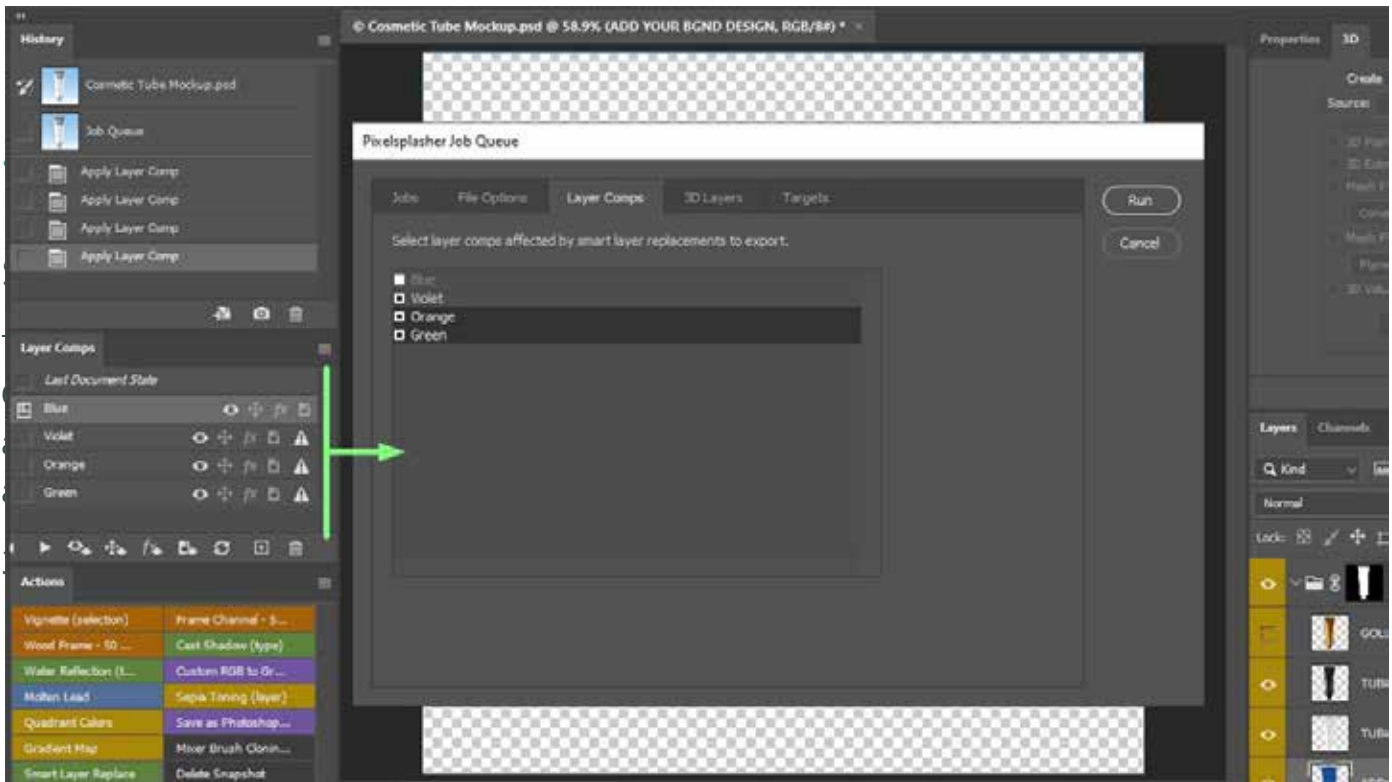


File Options Add-On

\$7/P\$5

File Options add-on gives you the ability to customize the filenames of the exported files according to the format that you specify. This can be based on custom text, target PSD filename and the document filename. File Options add-on is open to suggestions by its users and you can request for a filename format option to be added that may be useful to other users. Up to six filename format segments can be stringed together.

In future free updates, this add-on will be further developed to include file quality options.



Layer Comps Add-On

\$7/P\$5

Although you are able to export all layer comps as an option in the Job Queue add-on, Layer Comps gives you the option to select which layer comps to include for export in addition to the currently selected layer comp.

Layer Comps demo: <https://www.youtube.com/watch?v=e89VYIdPSVo>

How To Purchase

Prices may be slightly higher at [Adobe Exchange](#) to cover the cost of services by Adobe and Fast Spring.

You can purchase add-ons directly from Pixelsplasher by sending payments to Paypal at <https://www.paypal.me/pixelsplasher> and mentioning the add-on name and the Gmail address to share it to with Google Drive.

Get a discount of \$1 per item by buying more than one item with  PayPal.me.

Customer Support

Facebook: <https://www.facebook.com/PixelsplasherDotCom/>

Email: webmaster@pixelsplasher.com

Contact Pixelsplasher if you need help making the script work according to your needs. You may be asked to submit your PSD file and input file.

You may also request certain features that other customers may want to use. A major feature may be added as a separate add on script to be sold separately.

Tutorial videos are available at the Pixelsplasher YouTube channel: <https://www.youtube.com/Pixelsplasher>

Updates

All users are entitled to free updates up to one year since date of purchase. If you have purchased the script at Adobe Exchange, you can download applicable updates at: <https://exchange.adobe.com/creativecloud.partner.0011O00002DWKV7QAP.html>. Add-ons purchased at Adobe Exchange are subscription-based and may need to be renewed to continue getting newer version updates after one year since date of purchase.

If you have received the script via Google Drive, you can revisit the file link to check for new versions and download it. You may also add the file to your Google Drive folder as a shared file.

You may also receive update notifications in your email.